

CLR INFO

Industry News

As of October 1, New Regulations for Cranes, Flush Toilets, and Winter Tires Are in Effect



As of October 1, 2024, new regulations for tower cranes in British Columbia mandate a Notice of Project to improve safety inspections. Winter tire and chain requirements are now in effect from October 1 to April 30. Additionally, employers should review new guidelines for washroom facilities.

[Read more](#)

Labour and Economy

Metro Vancouver Proposes 2025 Budget Reduction



Metro Vancouver is proposing a budget reduction for 2025, aiming to decrease the anticipated cost for households on utility bills and property taxes. The average household rate increase is projected to drop from 11% to 9.9%, resulting in an estimated total payment of \$875 per household for regional services, a \$9 reduction from previous projections.

[Read more](#)

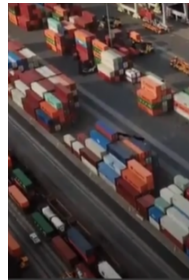
Carbon Rebate for Canadian Businesses Set to Payout by December 2024



Small and mid-sized Canadian businesses that filed their 2023 tax return by July 15, 2024, will receive a carbon rebate before the end of the year, as confirmed by Finance Minister Chrystia Freeland, with eligible enterprises set to benefit from a refundable tax credit based on the federal fuel charge collected since 2019.

[Read more](#)

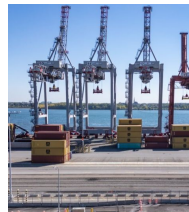
U.S. Port Shutdown Impact on Canadian Supply Chains



Dockworkers on the U.S. East and Gulf Coasts have launched a strike, halting operations at 36 ports. This first large-scale stoppage in nearly 50 years is expected to disrupt the flow of goods across various industries.

[Read more](#)

Montreal Dockworkers End Strike, but Supply Chain Tensions Persist



The union representing Montreal dockworkers has concluded a three-day strike at two major terminals, resuming operations; however, there are concerns about potential future job actions that could disrupt supply chains.



[Read more](#)

Infrastructure and Transportation



Vancouver Evaluates New Location for Barge Berth Amid Infrastructure Upgrades

Metro Vancouver is exploring a new site for a barge berth on Sea Island, intended as a staging area for the upgrade of the Iona Island Wastewater Treatment Plant. This proposed location follows significant community opposition to earlier sites.

[Read more](#)

Health and Safety



New First Aid Requirements Effective November

Employers must review their workplace first aid needs and implement necessary procedures to comply with the new regulations taking effect on November 1, 2024. This includes ensuring appropriate first aid supplies, trained attendants, and facilities are available based on factors such as workplace hazard ratings and employee numbers.

CLR is hosting a webinar on the upcoming changes to first aid regulations; [learn more and register here](#).

[Read more](#)

Diversity and Inclusion

Survey Reveals Progress and Challenges in Reconciliation Training for CPHR BC & Yukon Members



A survey by CPHR BC & Yukon shows that HR professionals believe their organizations are only halfway through advancing reconciliation training. While many have begun implementing land acknowledgements and providing training on Indigenous history and reconciliation, significant barriers such as time constraints and lack of team support remain, indicating a need for further guidance and resources.

[Read more](#)

Support and Funding



For a list of current funding resources and supports for employers and apprentices visit the [CLR website](#).

[Explore Resources](#)



© 2024 Construction Labour Relations Association of BC

97 Sixth Street New Westminster, BC V3L 5H8 604-524-4911

www.clra-bc.com info@clra-bc.com